



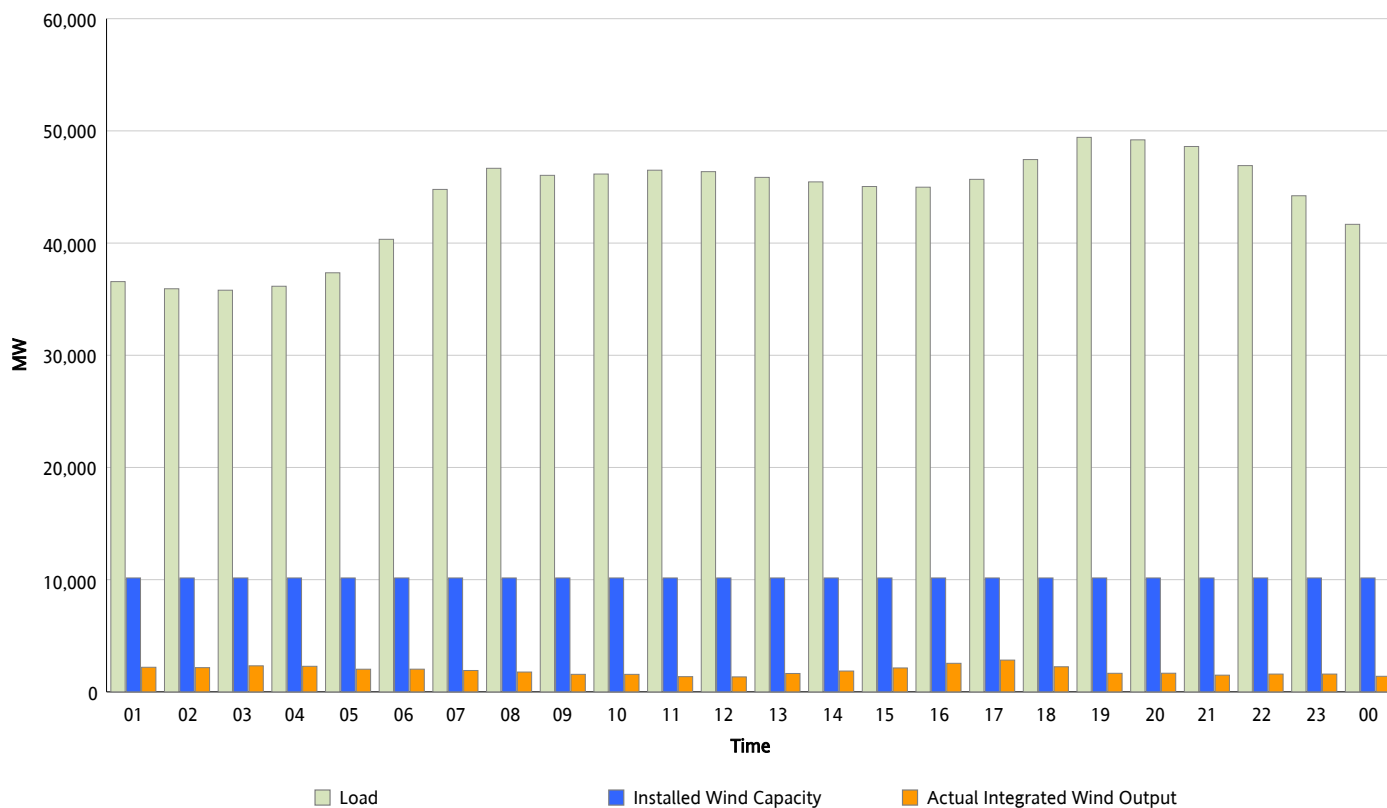
## ERCOT Grid Operations

### Wind Integration Report : 01/15/2013

Peak Load	49,424 MW
Load Peak Hour (HE)	19
Wind Over Peak	1,655 MW
Wind Record 12/25/12	8,638 MW
Max Wind Value*	2,942 MW
Wind Peak Time	16:29
Wind Integration %	6.43 %

#### Hourly Average Actual Load vs. Actual Wind Output

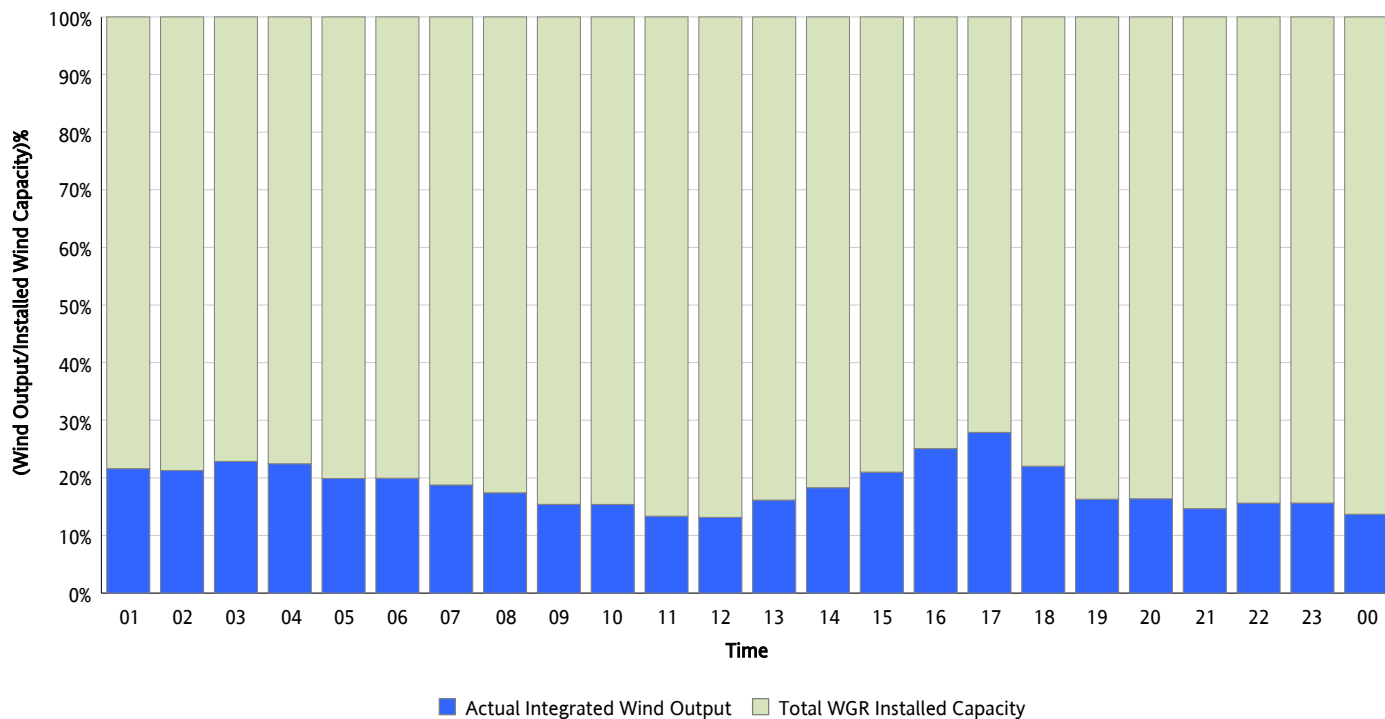
01/15/2013



\* Wind Record and Wind Max represent instantaneous values and the rest of the values are integrated over the hour

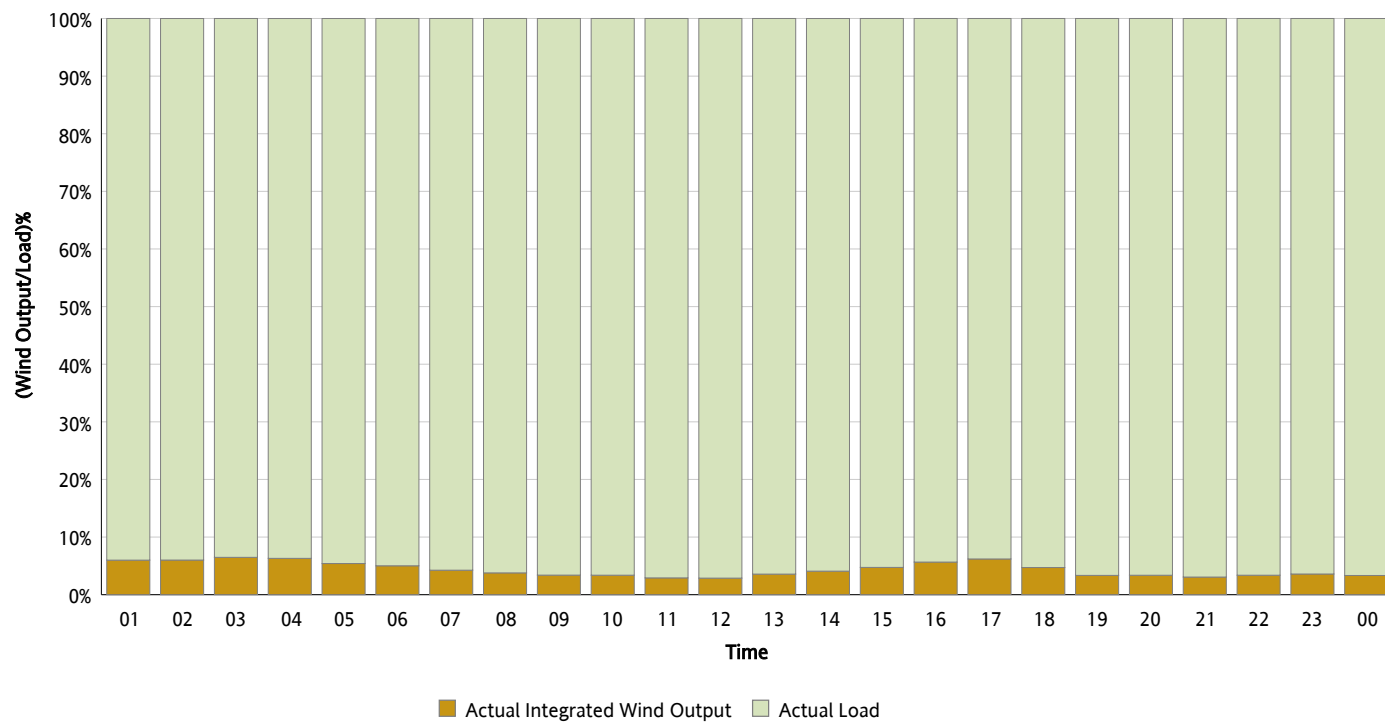
## Actual Wind Output as a Percentage of the Total Installed Wind Capacity

01/15/2013



## Actual Wind Output as a Percentage of the ERCOT Load

01/15/2013



## ERCOT Load vs. Actual Wind Output

01/08/2013 - 01/15/2013

